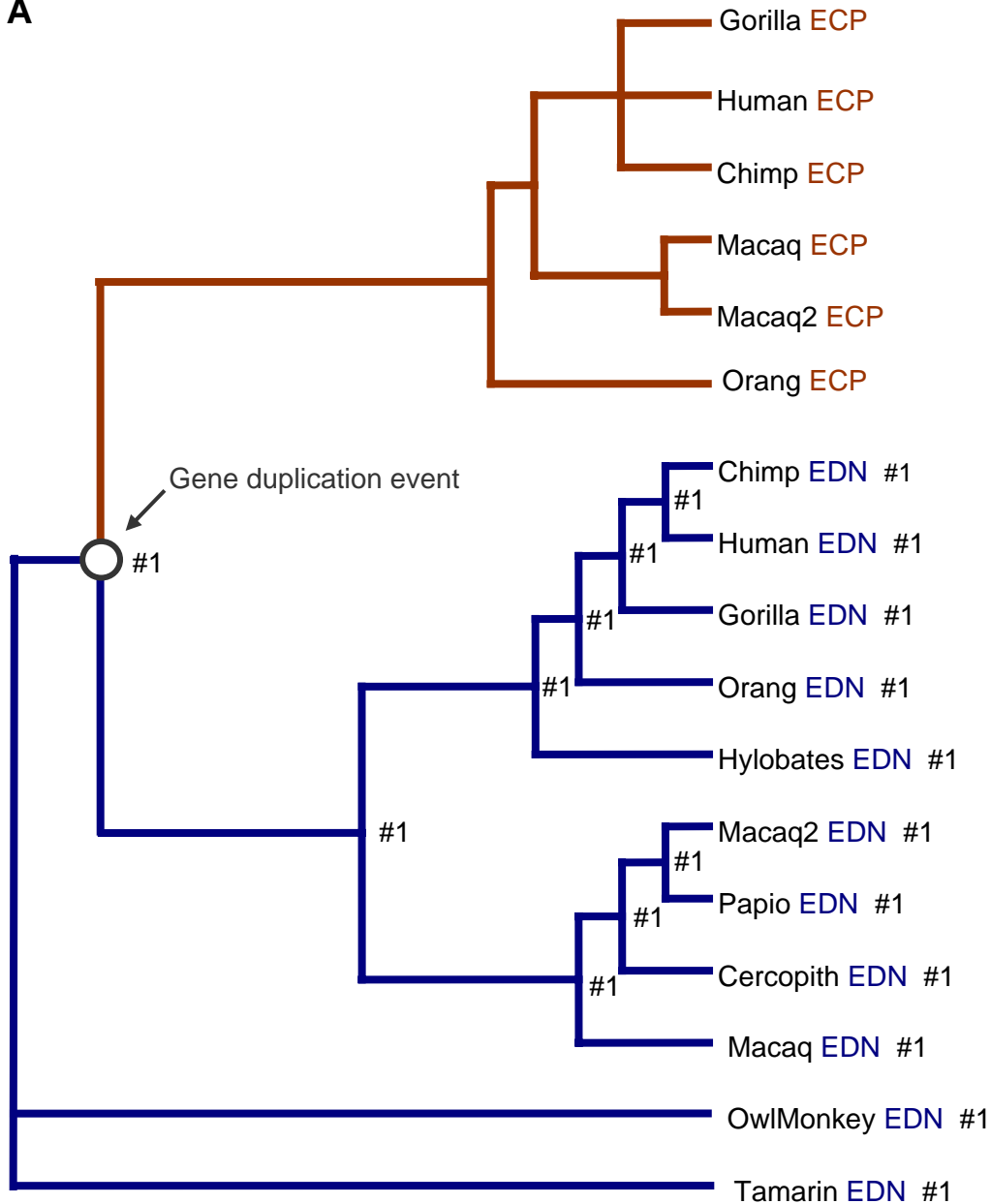


A**B**

```

((((Hylobates_EDN #1,(Orang_EDN #1,(Gorilla_EDN #1,(Chimp_EDN
#1,Human_EDN #1)#1)#1)#1)#1,(Macaq_EDN #1,(Cercopith_EDN
#1,(Macaq2_EDN #1,Papio_EDN
#1)#1)#1)#1)#1,(Orang_ECP,((Macaq_ECP,Macaq2_ECP),(Goril_ECP,Chim
p_ECP,Human_ECP))))#1,OwlMonkey_EDN #1, Tamarin_EDN #1);

```

Legend. (A) Is the 17 taxon gene-family tree. The paralogous EDN (lineages that postdate the duplication event) and the pro-orthologous EDN (lineages that predate the duplication event) are indicated by the #1 symbol. Note that this tree has a basal trichotomy and is therefore unrooted. (B) Is the same tree in the parenthetical notation required by codeml.